



# From lab to market – driving innovation across the bio-based value chain in Europe

*World Bio Markets, 8 June 2022*

# From lab to market: still a challenge?





# What is driving that challenge in the EU?



# What is BIC?

Connecting industry, academia, regions and citizens to transform bio-based feedstocks into novel sustainable products and applications, and create circular bioeconomy ecosystems through investments, innovation and know-how.

BIC's **industry members** cover all sectors of the bio-based economy

BIC's **associate members** include trade associations and research institutes



European  
Bioeconomy  
Alliance

> 240 industry  
members

> 160 associate  
members

BIC STRATEGY

CBE JU

BUSINESS

FINANCE

SOCIETY

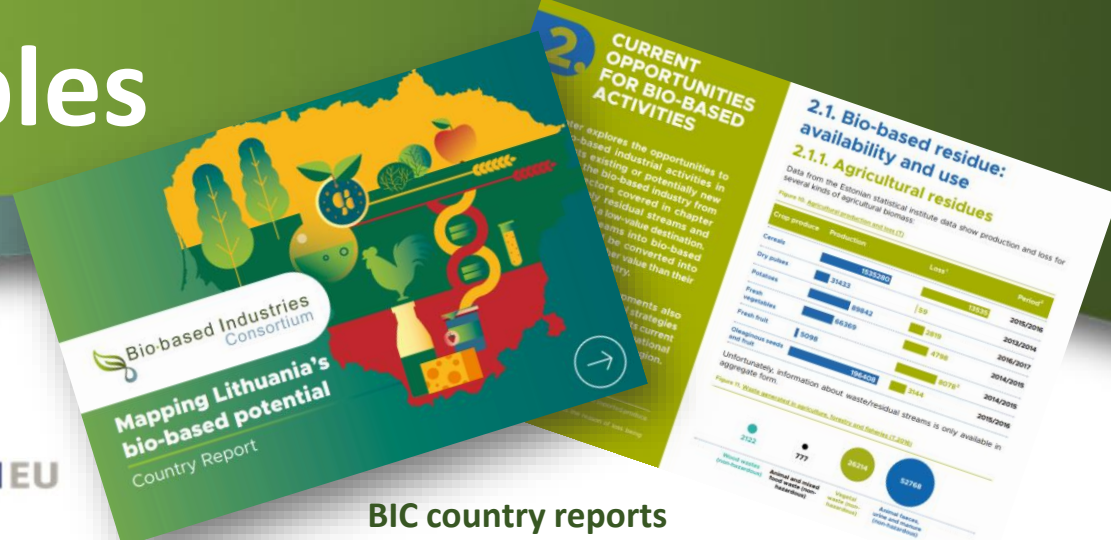




# Recent BIC activities: examples

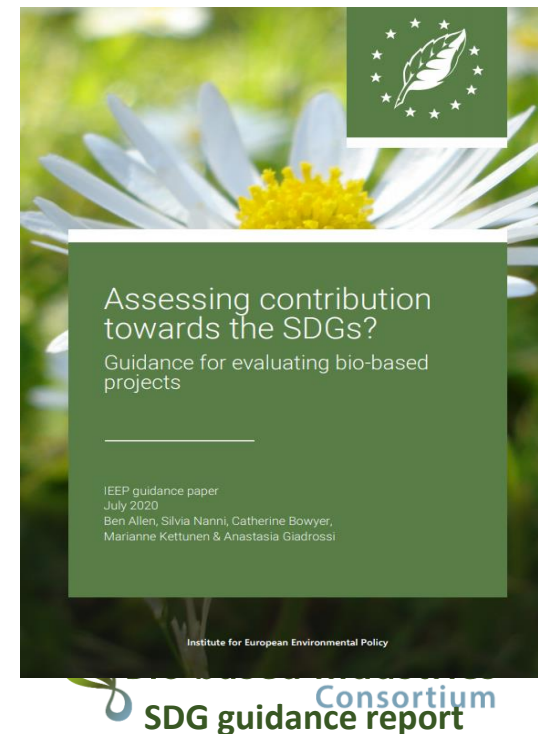


Partnering platform with regions including funding database



BIC country reports

## Study on availability of biowaste in EU



# Building bio-based value chain

## Biomass and organic waste

### From the agro-based industries

- Feedstock originating from the agriculture and agro-food industries
- Agricultural crops such as flax, hemp and fibre
- Co-products, side streams, and residues from the agriculture, including animal manure and from the agro-food industries, including residues from food processing plants

### From the forest-based industries

- Feedstock originating from the forest and forest-based industries
- 'Woody and non-wood forest feedstock'
- Co-products, side streams, and residues from the forest and forest-based industries, including the wood industry, saw mills, Paper and Pulp

### From the aquatic-based industries

- Feedstock originating from the aquatic and aquatic-based industries, including aquaculture, the fish and fish processing industries
- Co-products, side streams and residues from the aquatic and aquatic-based industries

### Bio-waste and CO<sub>2</sub>

- Biodegradable garden and park waste
- Food and kitchen waste from households, restaurants, caterers and retail premises
- Waste water and sludge
- CO<sub>2</sub>

BIOREFINERIES

## Bio-based products & markets

- Bio-based chemicals
- Bio-based plastics, polymers, materials, packaging
- Specialties (for example bio-based surfactants, lubricants, pharmaceuticals, nutraceuticals, cosmetics)
- Textiles
- Food ingredients and feed
- Advanced biofuels

Reuse & recycle  
Degrade  
Compost

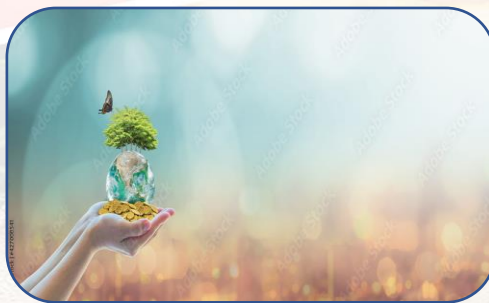


# Circular Bio-Based Europe Joint Undertaking

Advancing competitive, sustainable circular bio-based industries in Europe



Public-private partnership



Formulate the Strategic Research & Innovation Agenda (SRIA) with the EC



Develop with EC the Annual Work Programmes



Play an active role in CBE governance



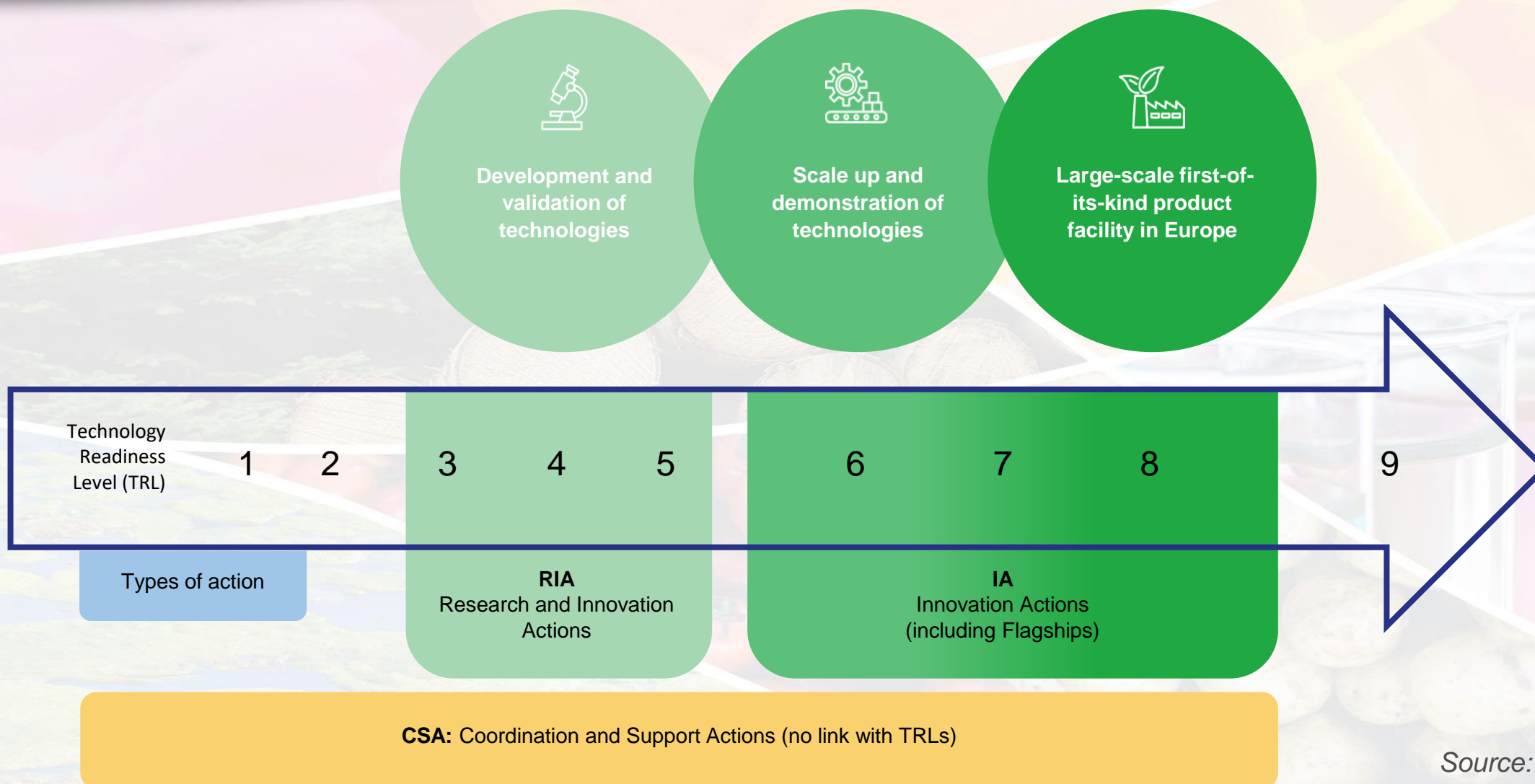
Cooperate with CBE JU advisory bodies and Programme Office

# CBE strategic priorities - the value chain

Feedstock	Processing	Products
<p>Strategic priority 1.1.1 Ensure the availability and quality of sustainable bio-based feedstock</p>	<p>Strategic priority 1.1.2 Develop innovative production systems in the bio-based industry</p>	<p>Strategic priority 1.1.3 Develop innovative bio-based products</p>
<p>Strategic priority 1.3.1 Protect and enhance biodiversity and ecosystem services in bio-based feedstock supply systems</p>	<p>Strategic priority 1.3.2 Improve environmental performances of bio-based processes</p>	
<p>Strategic priority 2.1.1 Demonstrate the sustainable supply of bio-based feedstock</p>	<p>Strategic priority 2.1.2 Deploy innovative production technologies</p>	<p>Strategic priority 2.1.3 Scale-up production and market uptake of innovative bio-based products</p>



# CBE JU: main types of actions



# Building on the success of BBI JU



142 projects



1055 beneficiaries

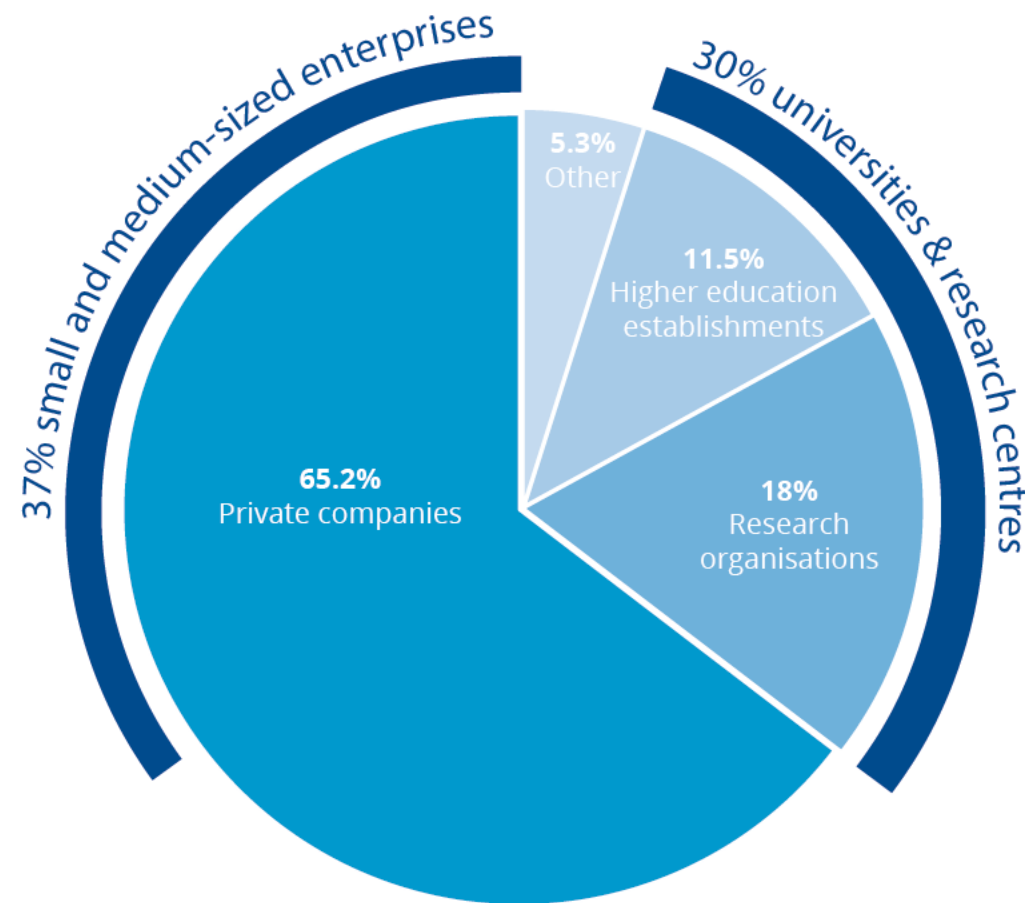


€822 million BBI JU funding



39 countries

BBI JU funding per type of beneficiary





# BBI JU flagship projects



Map

Description automatically generated

Sas van Gent  
the Netherlands

PLENITUDE

Co. Tipperary  
Ireland



AgriChemWhey

Saint-Avold  
France

AFTER |  
BIOCHEM

Amiens  
France



Saint-Avold  
France

ReSolute

Porto Torres  
Italy



Flagship biorefinery



Flagship biorefinery Call  
2020

PEference  
The Renewable Innovation

Delfzijl  
the Netherlands

OXILVA  
PROJECT

Sarpsborg  
Norway

SWEETWOODS

Imavere  
Estonia



Strážske  
Slovakia

lignoflag  
BBI JU

Podari  
Romania

# From Lab to Market: Still a Challenge?!

## Looking ahead

1. Impact of Ukraine war and geopolitical crisis e.g. food security, feedstock availability
2. Favourable “political” climate in Europe, increased acknowledgement of importance of bioeconomy e.g. EU Green Deal, non-EU investors
3. EU in global competition e.g. new bio-economy strategies ... China, FAO
4. Many funding opportunities, one-stop shop solution is missing



# Thank you

Marco Rupp - [marco.rupp@biconsortium.eu](mailto:marco.rupp@biconsortium.eu)