

A photograph of an industrial facility featuring several large, cylindrical, corrugated metal storage tanks. The tanks are interconnected by a complex network of pipes and metal walkways. Two workers in orange safety gear and yellow hard hats are visible on a walkway in the middle ground. In the background, there are industrial buildings and a city skyline under a cloudy sky. A green semi-transparent banner is overlaid on the left side of the image, containing white text.

Your home for  
low carbon &  
biobased activities



Port of  
Amsterdam



# Welcome to the port of Amsterdam





# European seaport in numbers



Inland shipping calls  
(no. ships in NZKG, 2021)

**67,842**

(63,755 in 2020)

Port related employment  
(no. of jobs, 2020)

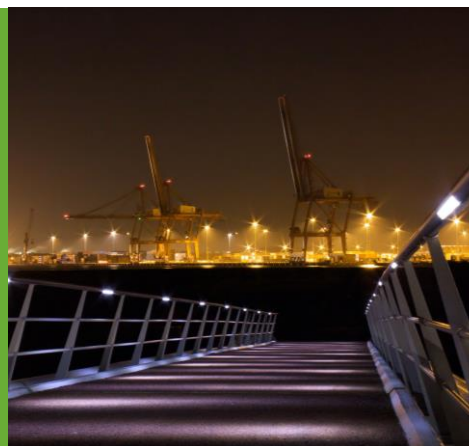
**67,492**

(71,576 in 2019)

Ambition non-fossile  
revenues

**65%**

(2025)



Gross site issue  
(in hectares, 2021)

**18.9**

(19.9 in 2020)

Sea shipping calls  
(no. ships in NZKG, 2021)

**7591**

(6621 in 2020)



Position sea port in  
Western Europe 2021

**4<sup>th</sup>**

(4<sup>th</sup> in 2020)

Companies in port area  
(no. In Amsterdam  
Westpoort)

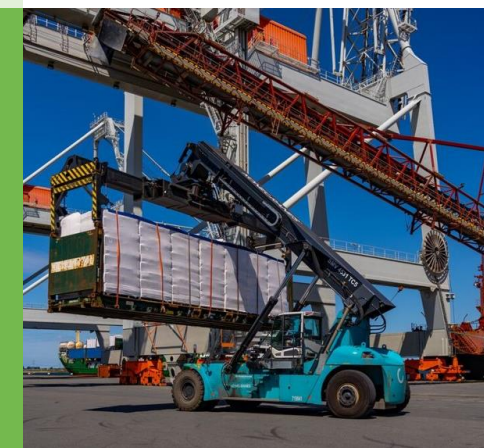
**1612**

(1549 in 2019)

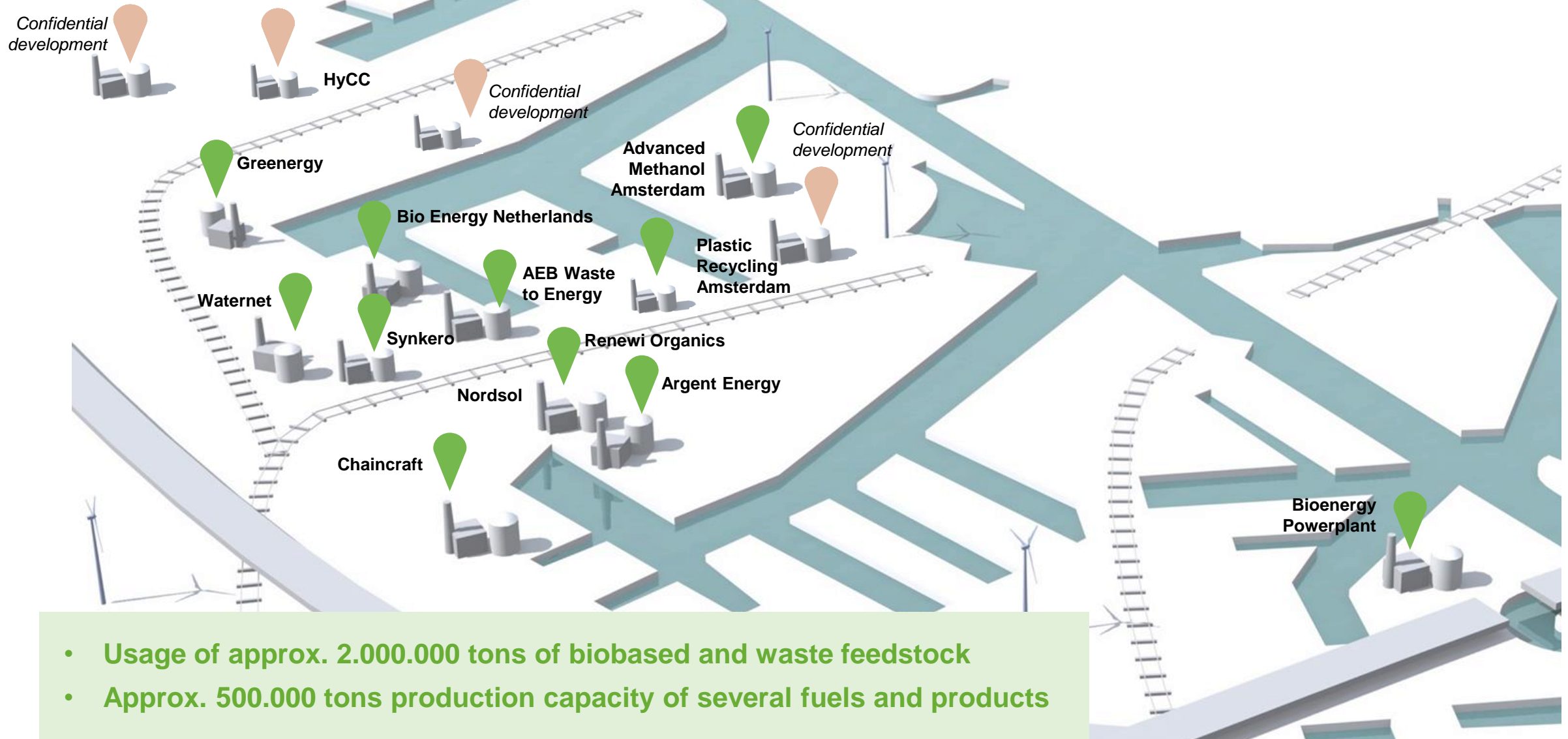
Transshipment in  
Amsterdam  
(in mln. tonnes, 2021)

**71.3**

(74.3 in 2020)



# One of the larger biobased clusters in Europe



- Usage of approx. 2.000.000 tons of biobased and waste feedstock
- Approx. 500.000 tons production capacity of several fuels and products



# Opportunities for biobased growth

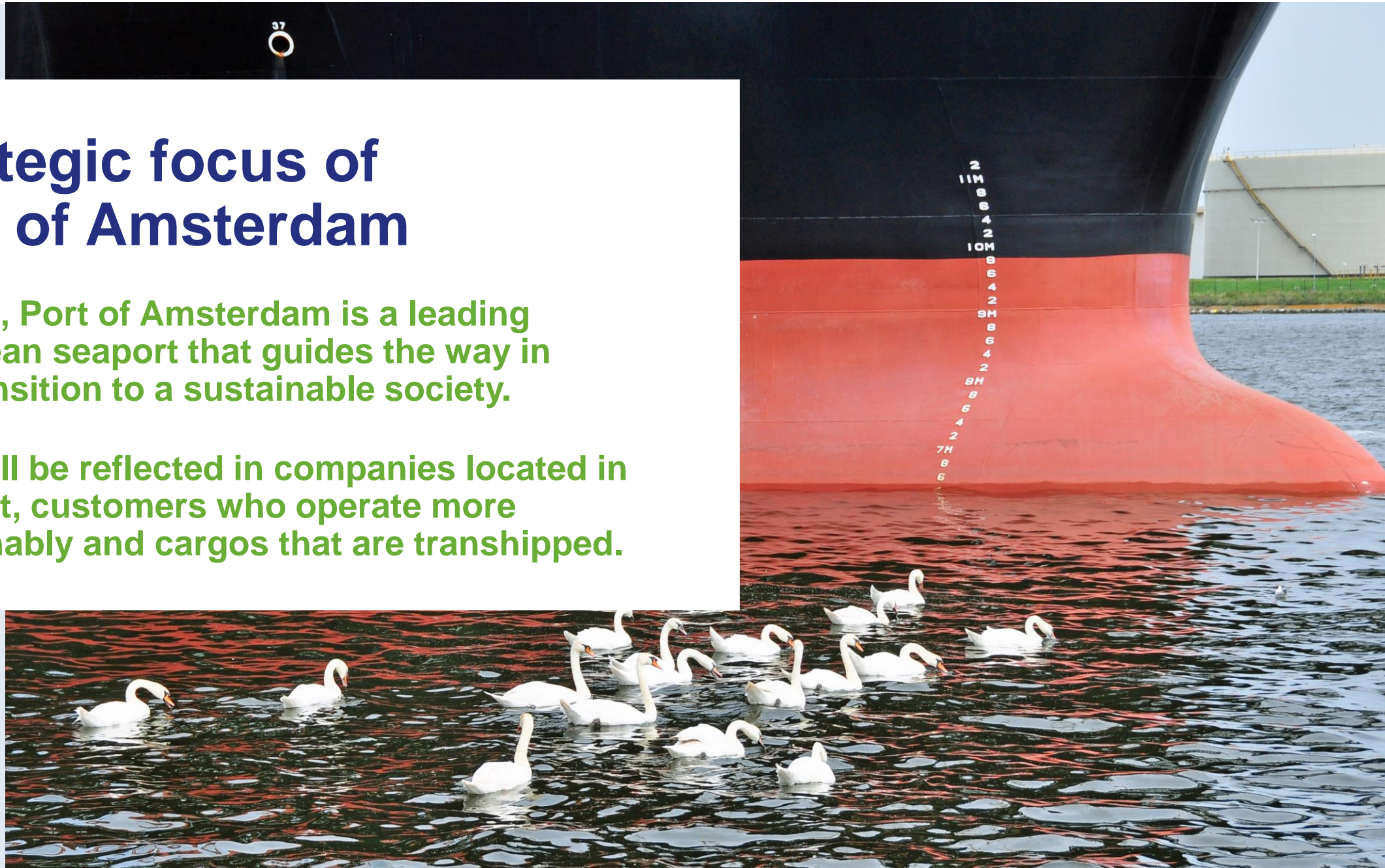




# Strategic focus of Port of Amsterdam

In 2025, Port of Amsterdam is a leading European seaport that guides the way in the transition to a sustainable society.

This will be reflected in companies located in the port, customers who operate more sustainably and cargos that are transhipped.



# Our promise:

**We offer  
dedicated space**

**We invest in the  
infrastructure &  
solutions**

**We bring  
parties together**





# We offer dedicated space







**We invest in  
infrastructure &  
solutions**



# We bring parties together





# Would you like to know more about the possibilities?

I would be happy to show you how we can contribute to your needs. If you have any questions, feel free to send me an e-mail or give me a call.



**Joey van Elswijk**  
Commercial Manager Renewable fuels  
+31 6 103 23 881  
[Joey.van.elswijk@portofamsterdam.com](mailto:Joey.van.elswijk@portofamsterdam.com)

