

# Relying on microorganisms & fermentation to build a sustainable industry

World Bio Markets – May 10, 2023 – Pierre Basuyaux



Everything,  
everywhere,  
all at once

# Lesaffre, raising life since 1853

- €2.7 billion turnover & 11,000 employees
- More than 170 years of fermentation know-how
- 77 production sites throughout the world
- 600 R,D&I experts



# Your industrial fermentation partner for a **sustainable tomorrow**

Industrial & technical expertise

Application expertise



Lesaffre production capabilities & scientific expertise in yeast

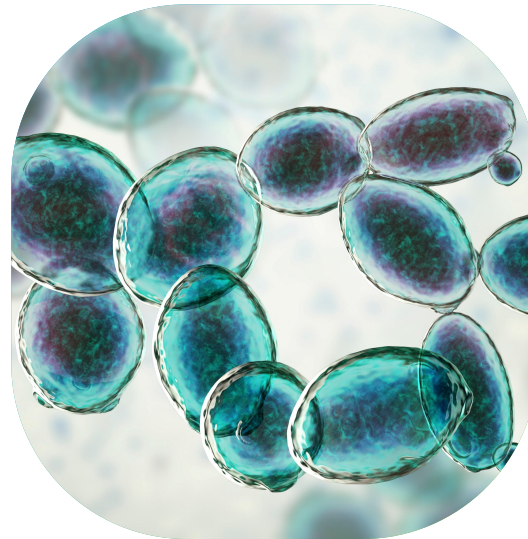
Industrial microorganisms and fermentation processes knowledge

Leveraging Lesaffre's fermentation expertise and assets, we develop fermentation solutions for industrial biotechnology

# What is at stake?



**Tackling today's challenges**  
nutrition, energy, material,  
environment, need for  
bio-based alternatives



**Combining new expertise**  
with existing industrial  
manufacturers' activities

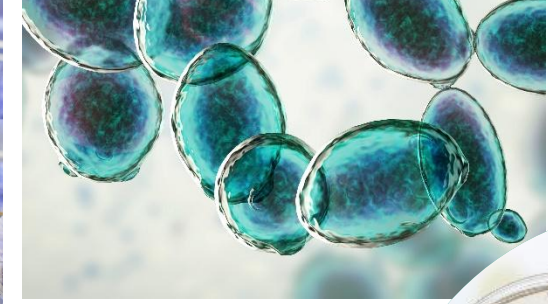


**Being the partner**  
providing the full range of  
solutions, integrating the  
different expertise

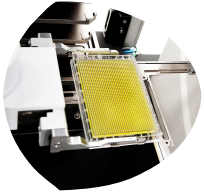
# From innovation to full-scale production

Your industrial fermentation partner for

- **Strain selection, development, and optimization**
- **Fermentation process development and optimization**
- **Fermentation process scale-up**
- **High quality & quantity biomass production**
- **Global supply chain compliant with local regulations**
- **Fermentation expertise to support on-site production**



# Relying on a strong network, expertise, and experience



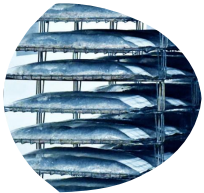
- **State-of-the-art assets**

- Lesaffre's ever-growing strain collection,
- Europe's largest private biofoundry,
- Recombia Biosciences



- **Microorganisms diversity**

- Yeast, bacteria, fungi
- Engineered & non-engineered strains



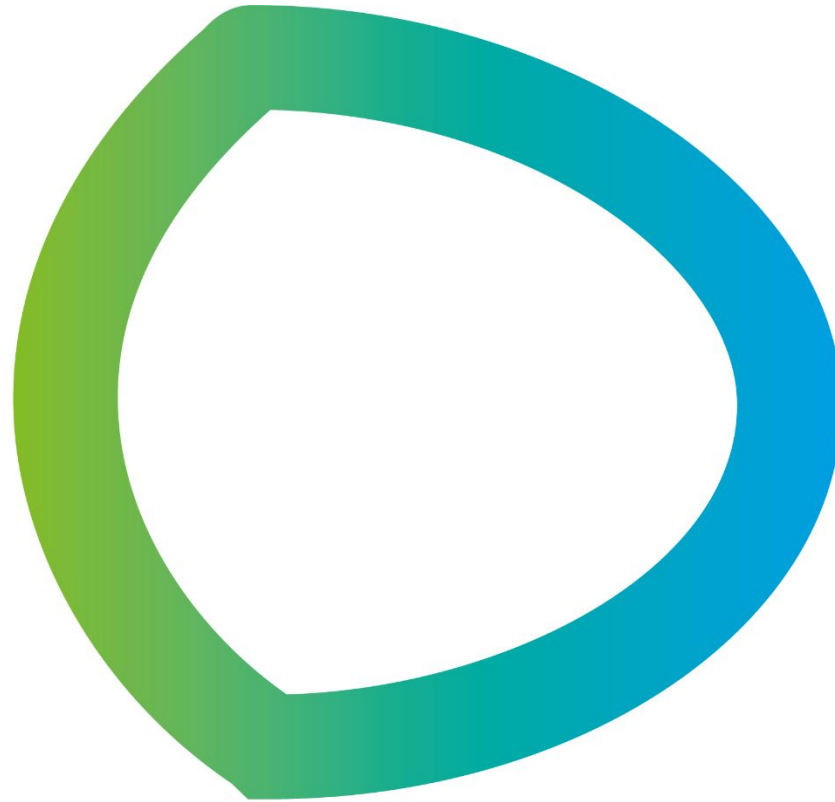
- **Fermentation mastery**

- Fermentation development, pilot, and commercial production sites
- Liquid & solide state fermentations



**Everything,  
everywhere,  
all at once**





[leaf-lesaffre.com](http://leaf-lesaffre.com)

[p.basuyaux@leaf.lesaffre.com](mailto:p.basuyaux@leaf.lesaffre.com)

Your industrial fermentation partner for a **sustainable tomorrow**